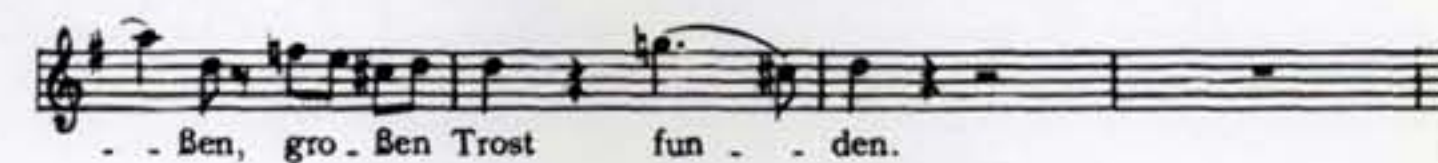


a score for ...

... a garden of remembrance



A full musical score for the piece "Garden of Remembrance". The score is written for a large ensemble, including Flute (Fl.), Oboe (Ob.), Clarinet in B-flat (Klar. (B)), Bassoon (Fag.), Horn in D (Hr. (D)), and Piano (P). The vocal parts are for Soprano (S.), Alto (A.), Tenor (T.), and Bass (B.). The score includes various musical notations such as dynamics (pp, p, dim., p esp.), articulation (acc.), and performance instructions (1. Solo, Solo, pizz.). The lyrics are in German: "Ben, gro - Ben Trost fun - den. ich will euch trö - sten, trö - sten, trö - sten. will euch trö - sten, euch trö - sten, trö - sten, trö - sten. will euch trö - sten, euch trö - sten." The score is illustrated with a detailed drawing of a garden scene, featuring a path, a large rock, and a small building. A red seal is visible on the right side of the score.



For:

Father David Musgrave  
Catholic Church of Constantia

Cape of Good Hope  
P.O. Box 161  
Constantia 7848  
South Africa

Julian Elliot  
Architect and Campus Planner  
5 Pembroke Lane  
Newlands 7700  
South Africa

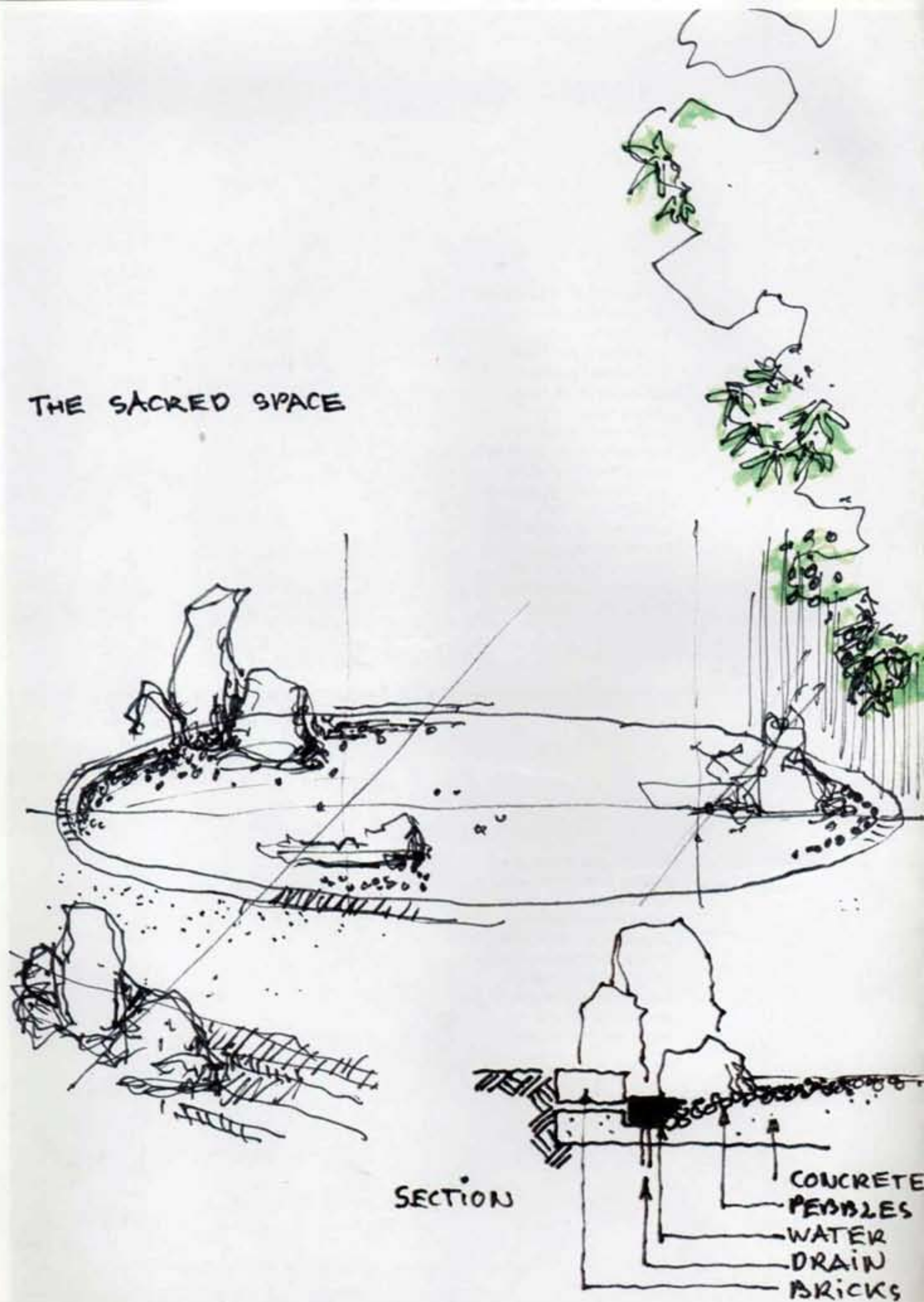
By:

Institute for East Asian Architecture and Urbanism  
Günter Nitschke, Architect, M.R.T.P.I.  
in collaboration with  
Kerstin Gödeke, Dipl.- Ing. Landscape Architect

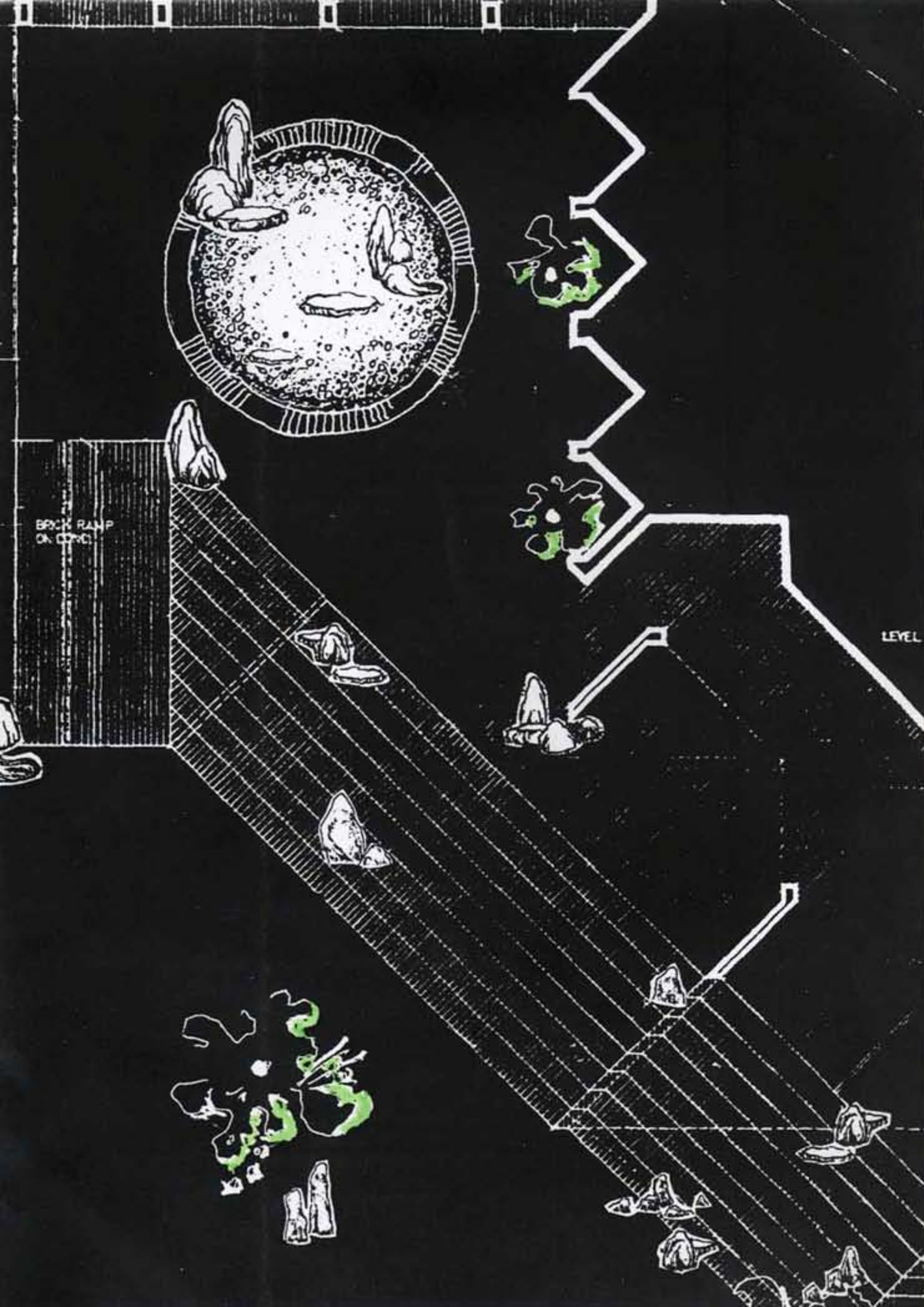
Kasuga Bldg., 4F  
Demizu-cho 253-3  
Marutamachi agaru  
Kawaramchi-dori  
Kamigyo-ko  
606-0862 Kyoto  
Phone / Fax: +81-75-256-6317  
email: nitschke@mbox.kyoto-inet.or.jp  
[http://nancho.net/east\\_asia\\_architecture](http://nancho.net/east_asia_architecture)

Kyoto, December 1999

## THE SACRED SPACE







## Concept

The Garden of Remembrance as a whole is designed to have its focus in a circle of pebbles on the upper level and an equally important approach to it along the steps.

The closed circular shape of the "burial ground", the sacred space, as it were, is consciously placed against the open linear arrangement of stairs.

Thus, the circle is positioned at the head of the steps like the clef at the begin of a musical score. Both on this circle and along the steps, natural not cut rocks are set like notes on a musical score. In another interpretation, the rocks set the melody, the steps the rhythm of this "spatial requiem" to the souls of the deceased.

By this design, the so far completely utilitarian long stairs, the trees close-by and the "burial ground" come to form one integrated composition of the Garden of Remembrance, which ultimately receives its meaning and beauty by the ceremony of the burial itself.





### Form

Rocks in their natural shape, not cut in a quarry – with beautiful texture, grain and color – even overgrown with moss, if available - sometimes they stand alone like single notes, sometimes in groups like chords

### Symbol

The rock appears as a symbol of durability, permanence and eternity in many cultures and creeds, as the tree stands for eternal renewal. In the design of the Garden of Remembrance rocks are arranged to evoke a spatial requiem in the mind of the beholder.







#### Form

White or slightly bluish river pebbles – spread thickly over a circular space, the ground proper for the burial ceremony. This space with pebbles slopes ever so slightly from the center towards the circular edge thus disappearing in a ring of water – thus visually one is suggested not to enter this sacred space. The circle is bounded by a layer of bricks identical to those of the steps.

#### Symbol

Pebbles by their form invariably suggest rivers, and thus the waters as such. In many creation myths like the Genesis the waters existed before the earth. The symbolism of water implies both death and rebirth.





## Steps



### Form:

The man-made regular form of rows of steps made of brick is contrasted in the proposed design by the irregular nature-made form of single or groups of natural rocks. The irregular but rhythmic placing of these rocks will have to be done carefully in order not to invoke the sight of bricks injured by the rocks.

### Symbol:

Obviously climbing steps elevates our bodies, but ascending through the unique natural sculptures of rocks here transforms the mundane experience of climbing steps from a mere functional act to a sensual delight and emotional elevation, too. Thus, simple walking is infused with consciousness, in other words, becomes an act of meditation.





#### Form:

In the design of the Garden of Remembrance the existing trees are respected in their form, location and presence. Extending some rock-groups close to some trees on the parking area these trees become an integrated part of the composition, too. The existing lawn should be carefully groomed and looked after. Some natural rocks arranged here and there might elevate the mere empty lawn into a garden.

#### The Green



#### Symbol:

The tree has stood as a symbol of Wisdom and a symbol of Life. In many cultures the sanctity of trees has been rediscovered in our days when we came to realize that the human being can simply not survive without the being and help of trees.