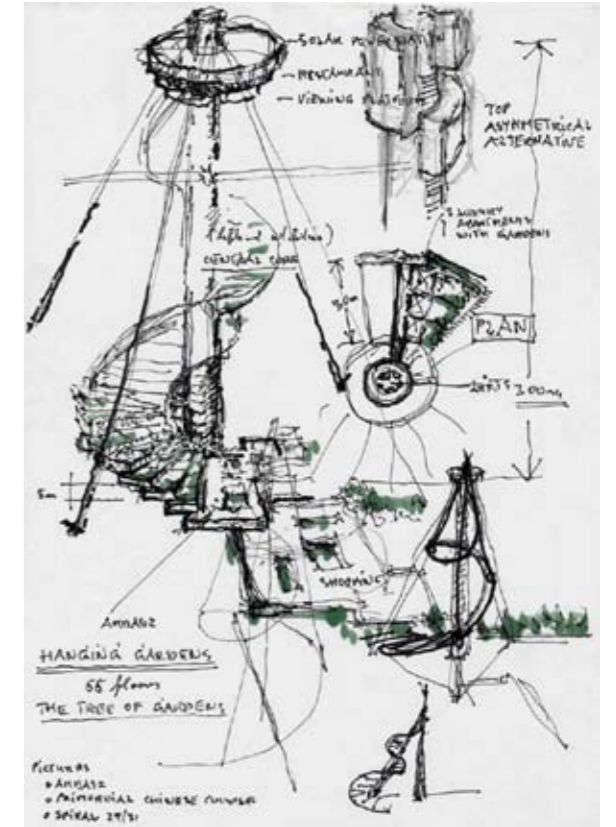


# SKY TOWERS AND EARTH PLATFORMS

International Urban Design Competition  
for the Taiwan Tower and Gateway City in  
Taichung, Taiwan, 2011



## Asian Strategic Partnership (ASP).

### PRINCIPAL:

Eka Swadiansa, ST., IAI.

Office of Strategic Architecture, Indonesia

Gunter Nitschke, Dipl.-Ing., Architect, MRTPI, Kyoto Institute for East Asian  
Architecture and Urbanism, Kyoto, Japan.

### ASP PARTNERS:

Kai Hsiang Liang,

Graduate Institute of Architecture, National Chiao Tung University, Taiwan

Oryza Angga Irawan, Bensley Design Studio, Bali Office, Partnering Architect

Dedy Nurmansyah, ST.Labirin Estetika Studio, Bali Office, Partnering Architect

David Sugiarto, Architect, Surabaya-Malang, Indonesia, Partnering Architect



# The City as Garden and the Garden as City

SKY TOWERS and EARTH PLATFORMS and their EXPANSION MODULE

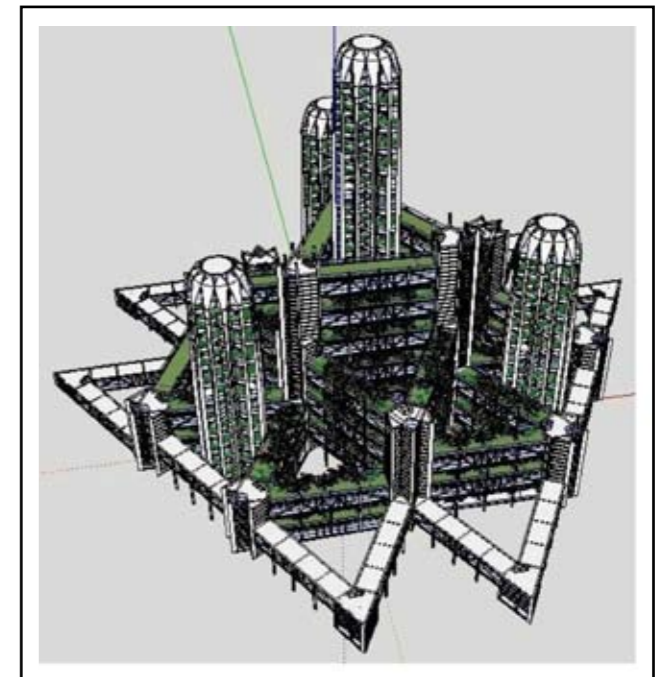
Our proposal in this competition was not only to consider the design of a single tower, but to suggest an expansion plan together with the design of a tower integrating this tower with the whole of the greater Taichung Gateway City project, in other words, to combine the stated five pillars of the future Taichung Gateway City within one future comprehensive strategy.

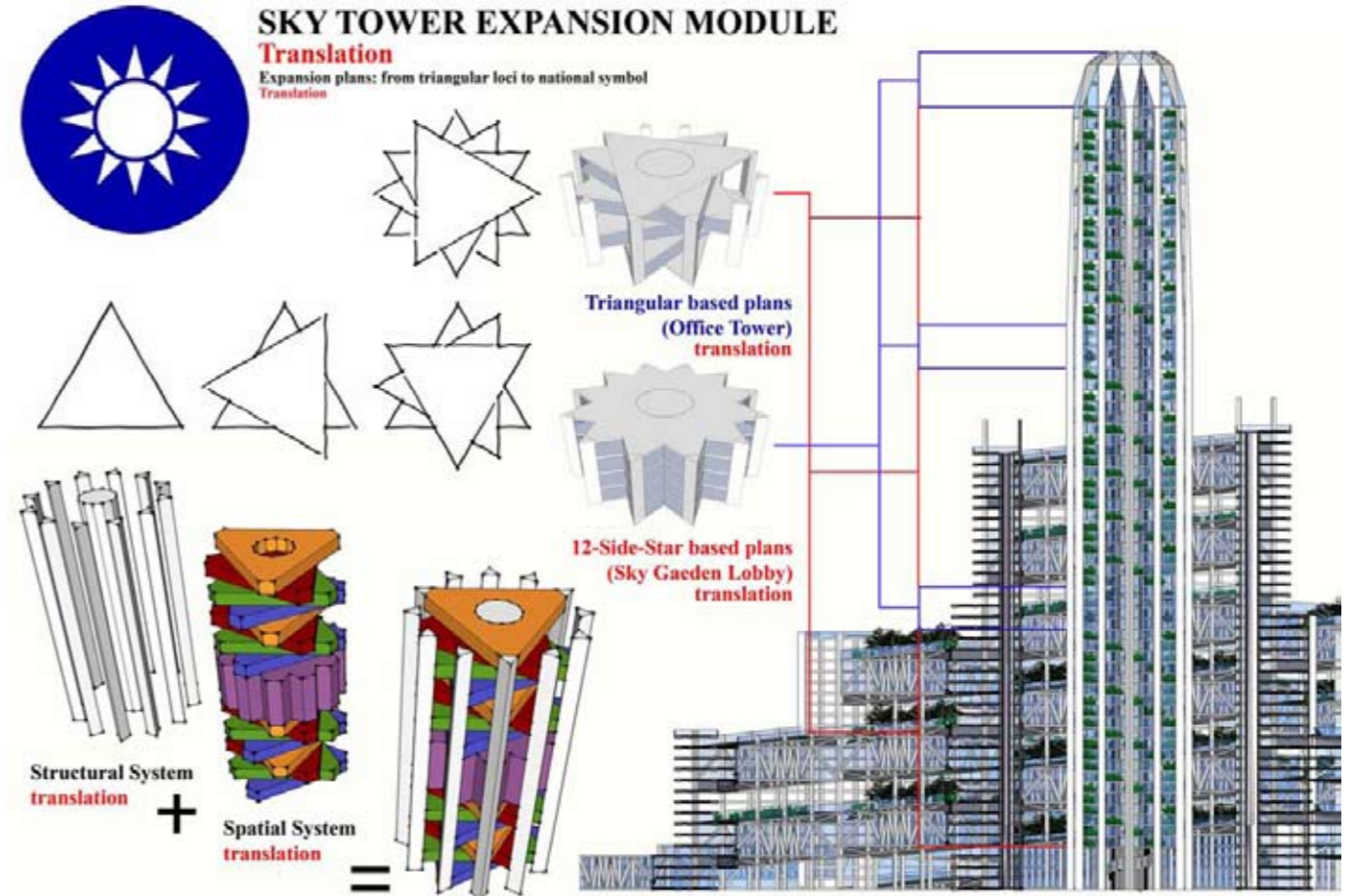
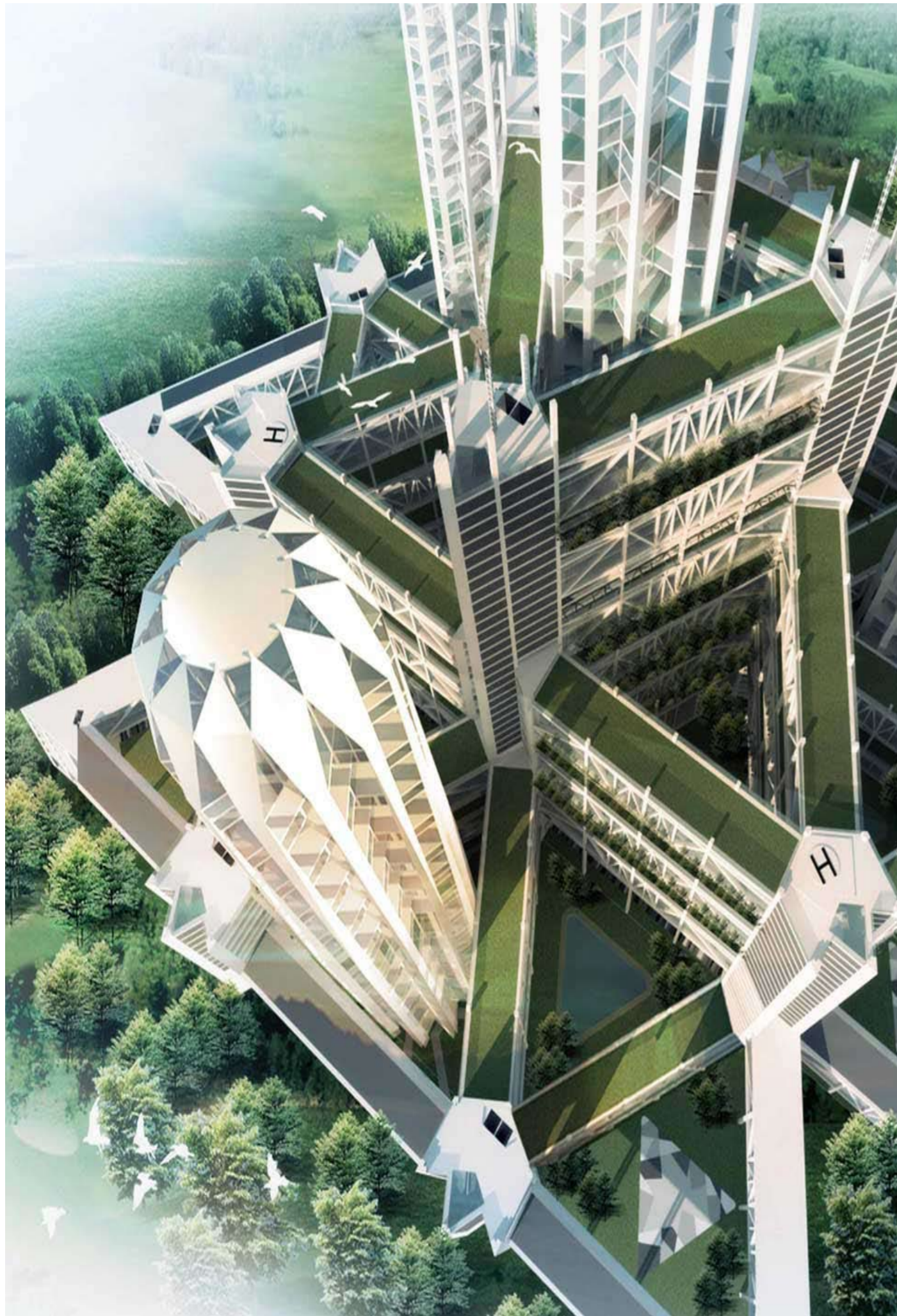
Seen as an open-ended Expansion Module, the Taiwan Tower Development was conceived by us in a way that it could easily grow and change according to the needs and wishes of its future occupants. It does not only provide accommodation to live in, but also all essential everyday services necessary, such as stores and shopping malls, as well as, social institutions, such as schools, hospitals and police stations.

Through the flexible mechanics of this suggested expansion module our proposal allows for gradual growth and the Taiwan Tower itself will ultimately become the Taichung Gateway City.

As to the combination and assembly of the SKY TOWER and the EARTH PLATFORMS, the SKY TOWERS are meant to become economic beacons for the future, to be built as a vertical CBD of an ever expanding metropolis; the EARTH PLATFORMS, however, offer man-built agriculture and green living spaces. In future industrialized urban civilizations where natural landscapes will become extinct, the obvious way for human survival will be to harvest his food to a great degree on man-made ground high-up on multi-storey platforms. And they will be directly connected to their counterparts, the SKY TOWERS, as future places for work.

The Expansion Module will also be interwoven with the new Taichung Gateway Forest. Occupying 152 hectares of the city area, the forest would melt the Taiwan Towers with the future Gateway Forest. Far from an usual modern parkscape for merely decorative purposes, the future Taichung Gateway Forest will fulfil a double role: first, it is meant to infiltrate the whole built development with green and thus integrate architecture and nature; second, to help nature to heal itself in our modern urban contexts. The human being will have to relearn the ways of nature by actively participating in the processes of nurturing and maintaining plants over time. Both roles are essential to create a modern sustainable urban environment for future generations. The result would be the realization of a dream of modern architecture: **The City as a Garden and the Garden as City.**





### ENVISIONING TAICHUNG GATEWAY CITY

**translation..**

